

# TRADITIONAL T-2536

## INSTALLATION INSTRUCTIONS



### WARNINGS

**PLEASE READ THE FOLLOWING INFORMATION BEFORE INSTALLING AND USING YOUR HEATED TOWEL RACK.**

- These units should be installed by a certified electrician in accordance with the National Electrical Code (NEC) and the Canadian Electrical Code (CEC).
- The unit requires a 120 volt, 60Hz power source and should be installed on a GFCI protected circuit.
- Follow installation instructions to ensure unit is securely fixed to wall. Unit is designed for drying towels. Under no circumstances should anybody climb on or hang on unit.
- The unit must be installed in an upright position with the wire cover tube / junction box being positioned at the bottom.
- Unit is intended for indoor use only. Do not place units inside a shower, sauna, steam room, or wherever unit would be exposed to water.
- To reduce the risk of electric shock, burns, fire or injury:
- Close supervision is necessary when this unit is used near children or disabled persons.
- Use this unit only for its intended use as described in this manual.
- Do not use outdoors.
- Do not operate with a voltage converter.
- Do not touch hot surfaces.
- Do not use accessories or attachments not recommended by the manufacturer as this may cause injuries.

### CAUTION

- As this is a heating device, the surface temperature can increase depending on the ambient temperature in the room and the number of towels applied to the unit.
- The fasteners provided with the installation kit are for convenience only and are not suitable for all installation conditions.
- It is the ultimate responsibility of the installer to ensure proper mounting hardware is employed in attaching the unit to the wall.

### OPERATING INSTRUCTION

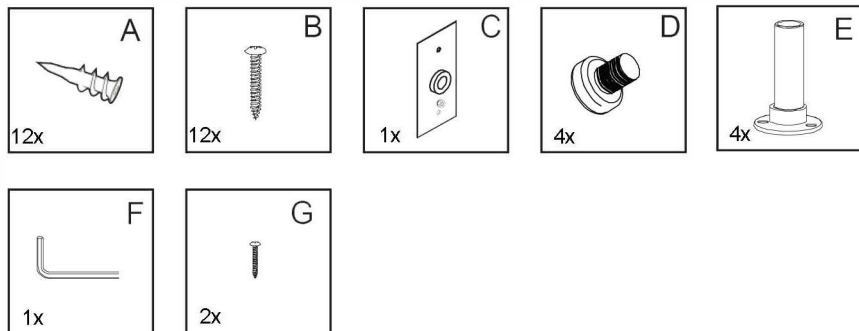
- After installation, connect the electric power.
- Turn on the wall switch and towel warmer will start to heat- Allow 10-20 minutes to heat up.
- This towel warmer has been designed to run continuously- turn off at wall switch when the towel warmer is not in use for long periods of time.

### CARE & MAINTENANCE

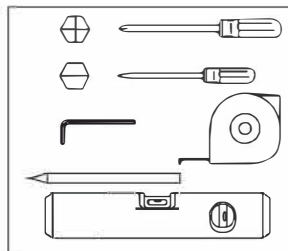
- Towels which contain soap or detergent residue may appear to have scorch marks; this is simply discoloration of the residue in the towels themselves.
- The unit is constructed from extremely durable low carbon steel. To maintain a good appearance, follow these simple instructions:
- For routine cleaning, simply switch off the unit, allow to cool to room temperature, wipe with a damp cloth and buff with a soft, dry cloth.
- Under no circumstances should abrasive cleaners be used to clean the unit.
- If the product is damaged, do not repair by yourself, please return to the maintenance center for repair.

## SAVE THESE INSTRUCTIONS FOR REFERENCE

### INCLUDED COMPONENTS



### TOOLS REQUIRED



### ELECTRICAL INFO

150 watts    1.3 amps    120 volts

### WARRANTY

Two year limited warranty with proof of purchase will apply if all Terms and Conditions of Sale are met and Installation Instructions are adhered to.



FOR FULL WARRANTY VISIT:  
[www.ambaproducts.com/warranty](http://www.ambaproducts.com/warranty)

# TRADITIONAL T-2536

## INSTALLATION INSTRUCTIONS



### PARAMETER



CONFORMS TO UL  
STD.499  
CERTIFIED TO CSA  
STD C22.2 NO.64  
Towel Warmer  
Model:T-2536  
Rated voltage:120V~  
Rated frequency:60Hz  
Rated power input:150W  
Serial No.: (周) XX/ (年) XX

**Amba**

CAUTION:  
HOUSEHOLD USE ONLY  
DO NOT IMMERSE IN WATER  
HOT SURFACE  
AVOID CONTACT  
UTILISATION DU  
MÉNAGE SEULEMENT  
NE PAS PLONGER  
DANS L'EAU SURFACE  
CHAUDE ÉVITUE CONTACT

### CONTACT

TEL:  
404-3509738

FAX:  
404-3550166

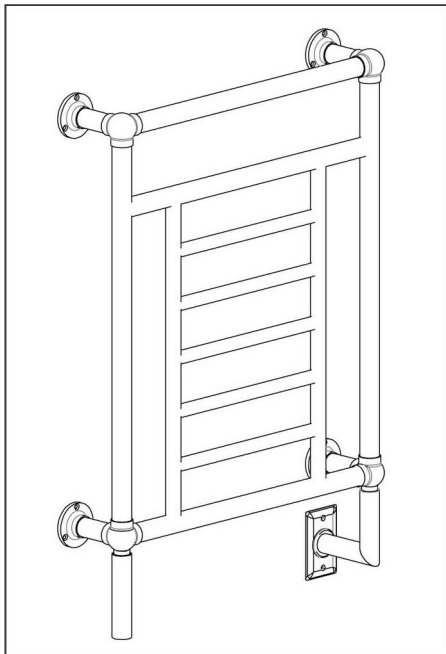
EMAIL:  
customerservice@ambaproducts.com

WEB:  
www.ambaproducts.com

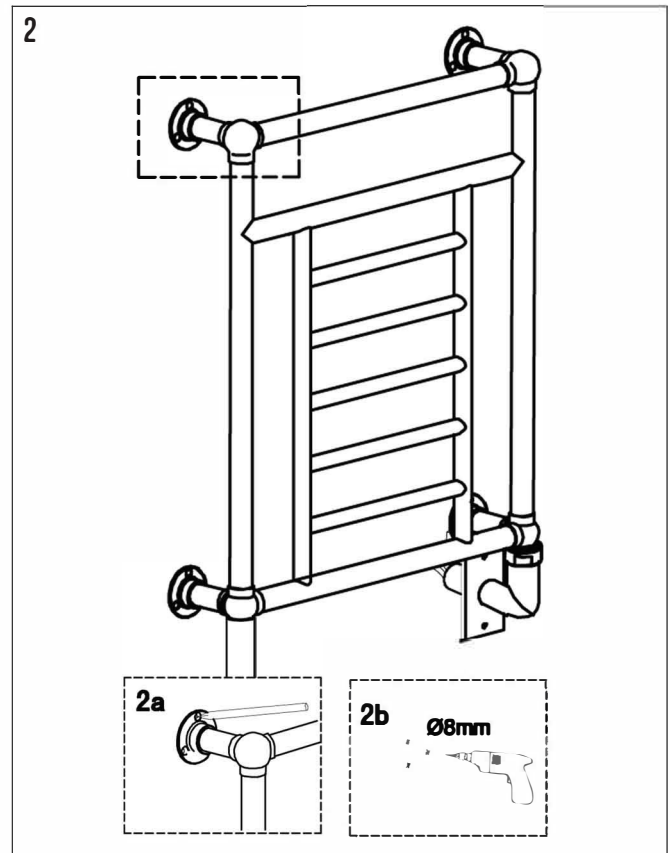
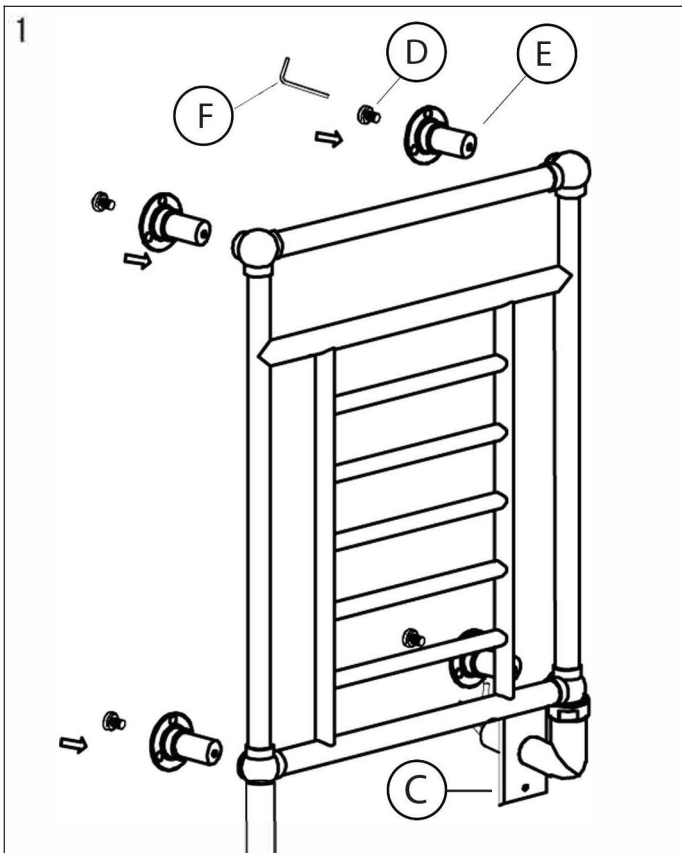
### AVAILABLE MODELS

T-2536 PN T-2536 BN

P-Polished Nickel B-Brushed Nickel



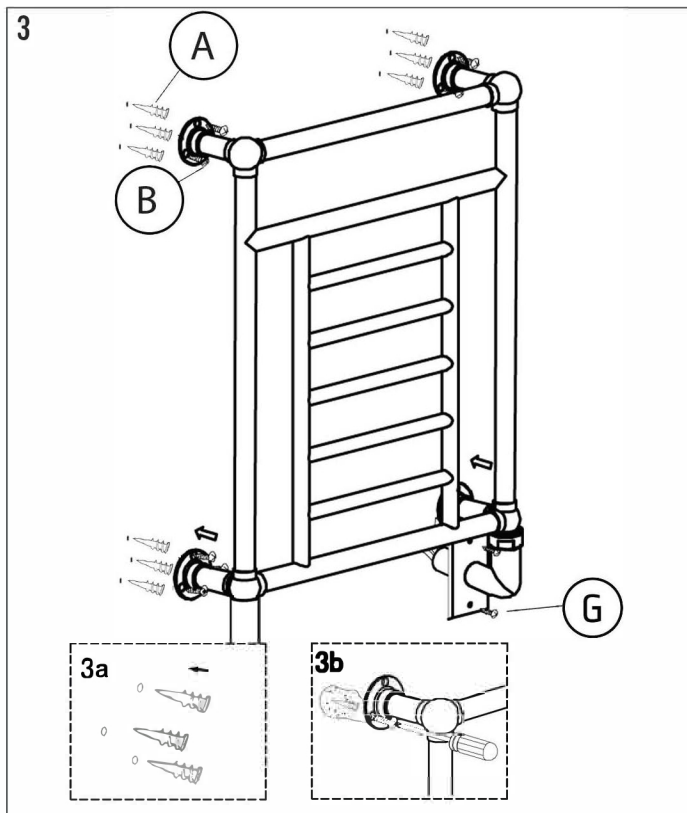
Liquid-filled models MUST be installed with the wire cover tube / junction box being positioned at the bottom.



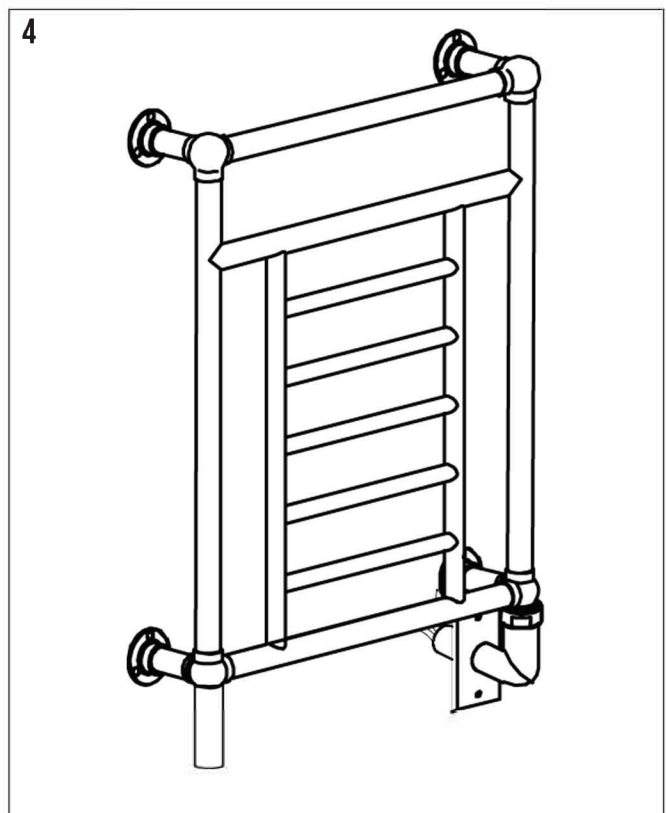
**! CAUTION — SURFACE OF UNIT IS HOT WHEN ON !**

# TRADITIONAL T-2536

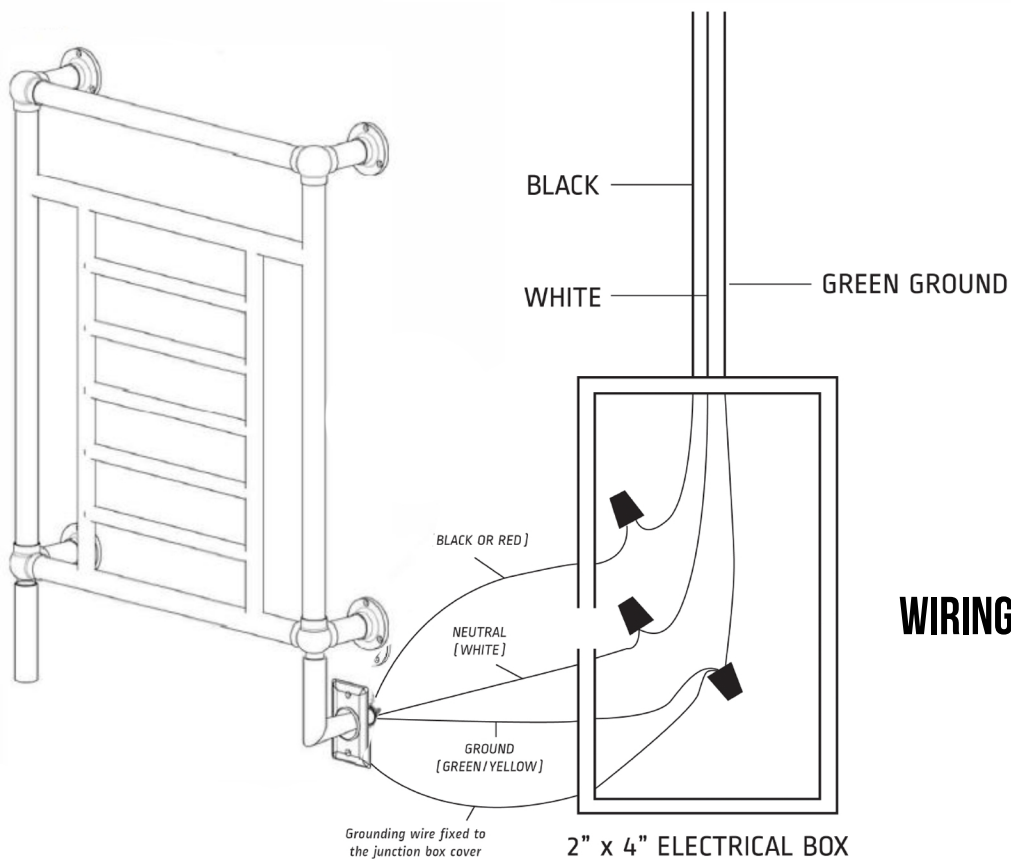
## INSTALLATION INSTRUCTIONS



**DO NOT OVER-TIGHTEN SET SCREW**



**TURN UNIT ON WITH WALL SWITCH**



**WIRING DIAGRAM**

**! CAUTION — SURFACE OF UNIT IS HOT WHEN ON !**